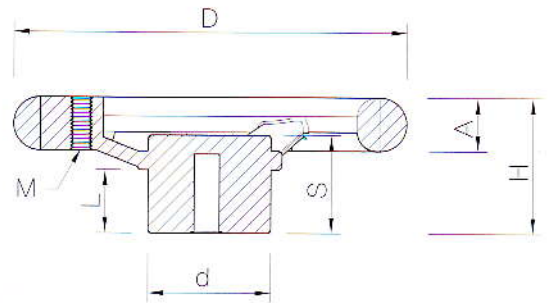


*재질 : 알루미늄 합금



단위:mm

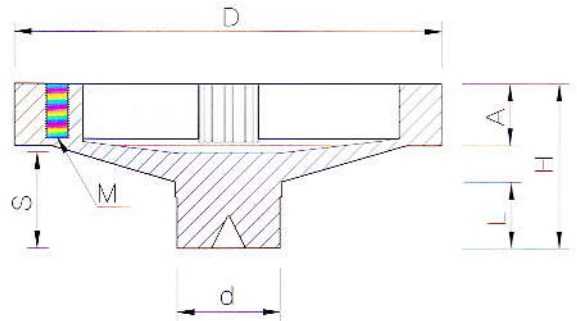
TYPE	D	H	A	S	L	d	M
ALH 80	80	33	15	24	17	29	6×1.0
ALH 100	100	38	16	28	18	34	6×1.0
ALH 125	125	43	17	31	20	39	8×1.25
ALH 140	140	47	19	34	21	40	8×1.25
ALH 160	160	52	20	39	29	43	10×1.5
ALH 180	180	55	22	42	26	48	10×1.5
ALH 200	200	58	23	45	28	51	10×1.5
ALH 250	250	65	25	47	30	58	12×1.75
ALH 300	300	71	28	52	30	67	12×1.75

WJs**ASH 알루미늄 일자 핸들**

Aluminum Straight Hand wheels

*재질 : 알루미늄 합금

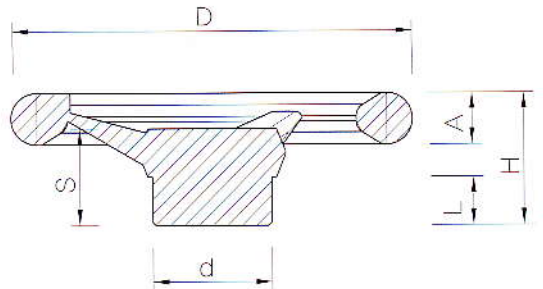
*처리 : 분체 열처리 도장



단위:mm

TYPE	D	H	A	S	L	d	M
ASH 100	100	40	14	26	10	27	6×1.0
ASH 125	125	48	18	28	15	30	8×1.25
ASH 140	140	54	20	32	17	33	8×1.25
ASH 160	160	58	23	33	17	35	10×1.5
ASH 200	200	70	27	39	20	43	10×1.5
ASH 250	250	79	27	45	20	46	12×1.75

*재 질 : FC20 . 크롬도금 (은색)



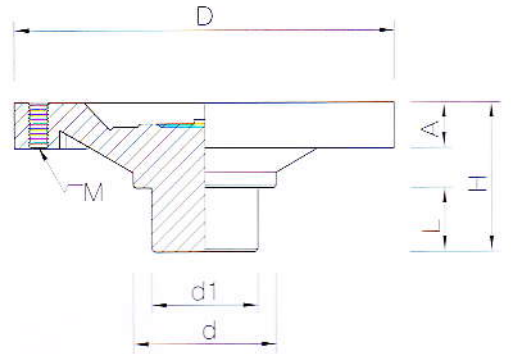
단위:mm

TYPE	D	H	A	S	L	d
FC 80	80	35	15	26	15	29
FC 100	100	39	15	26	13	32
FC 125	125	41	16	30	15	37
FC 140	140	45	18	30	12	45
FC 150	150	49	19	35	16	46
FC 160	160	48	16	38	18	47
FC 180	180	57	20	45	22	54
FC 200	200	60	22	44	25	56
FC 225	225	63	22	46	22	58
FC 250	250	72	22	53	26	63
FC 300	300	70	24	52	28	67
FC 350	350	76	31	52	30	70
FC 400	400	86	31	65	29	88

WJs**NH 제노이 핸들**

Poly Butylene Terephthalate Hand wheels

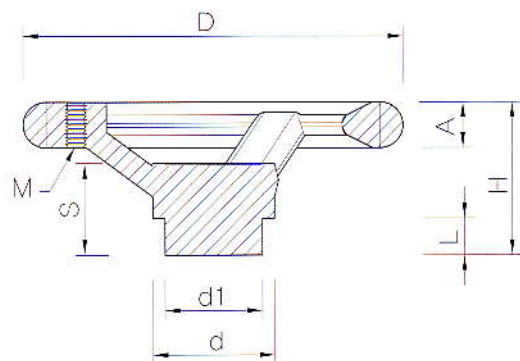
*재질 : PBT(흑), S45C(아연도금), 황동



단위:mm

TYPE	D	H	A	L	d	d1	M
NH 80	80	45	14	17	40	30	6×1.0
NH 100	100	45	14	16	40	30	6×1.0
NH 125	125	49	15	21	47	35	8×1.25
NH 140	140	49	18	17	49	38	8×1.25
NH 150	150	50	18	17	49	38	10×1.5
NH 175	175	57	19	24	58	40	10×1.5
NH 200	200	71	21	25	61	45	10×1.5

*재질 : 나일론(흑색), S41C(아연도금), 황동



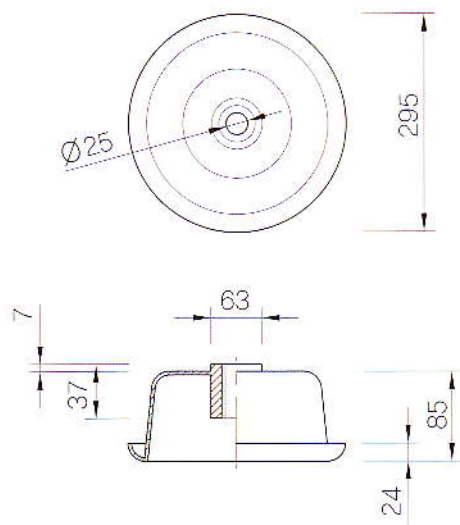
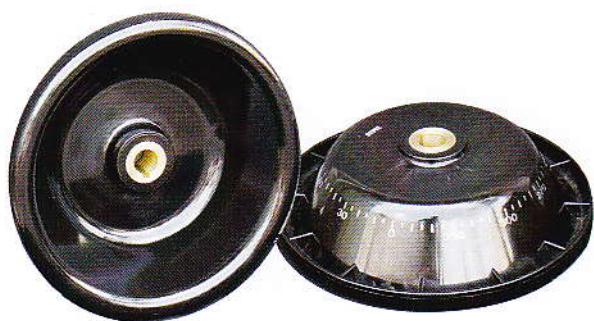
단위:mm

TYPE	D	H	A	S	L	d	d1	M
PH 80	80	42	13	29	12	32	25	6×1.0
PH 100	100	46	14	29	11	34	28	6×1.0
PH 125	125	50	15	30	12	40	32	8×1.25
PH 140	140	55	16	36	13	44	35	10×1.5
PH 160	160	60	17	37	11	45	35	10×1.5
PH 200	200	73	19	45	19	49	40	10×1.5
PH 250	250	82	21	53	20	54	45	12×1.75
PH 300	300	94	25	58	23	62	50	12×1.75

WJs TH 타이밍 핸들

Timing Hand wheels

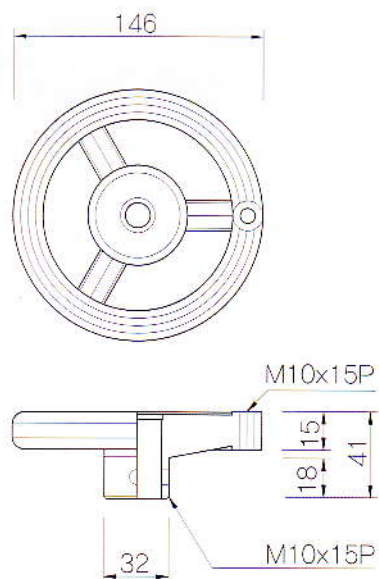
*재질 : ABS(흑), S10C, 황동



WJs TMH 섬유기계 핸들

Textile Machinery Hand wheels

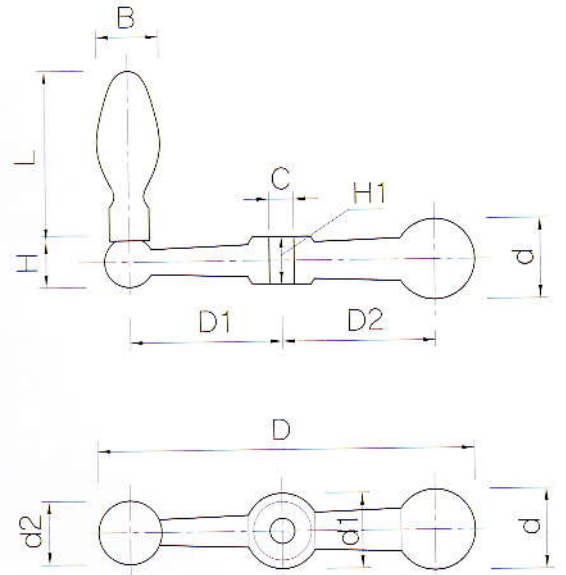
*재질 : 나일론수지(흑), S10C, 황동



WJs**AXG 축 손잡이**

Axoal Grip

*재질 : S45C(크롬도금)



단위:mm

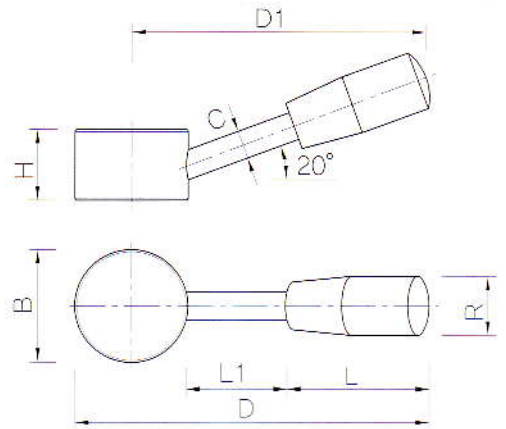
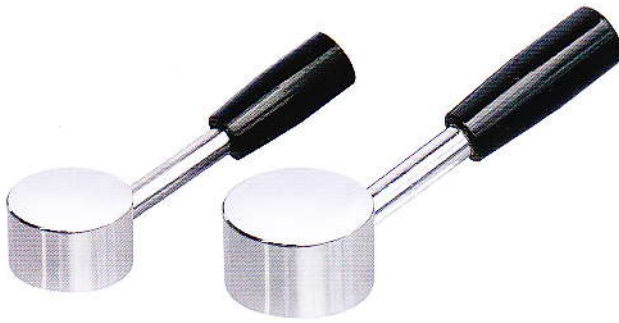
TYPE	D	D1	D2	H	H1	L	C	B	d	d1	d2
AXG 81	81	33	33	13	15	50	8	16	21	22	16
AXG100	100	39	40	17	19	65	8	20	24	28	20
AXG148	148	62	62	17	23	80	10	25	32	30	20
AXG186	186	82	75	20	25	86	12	31	38	35	23

WJs

CL 조정레버

Control Lever

*재질 : S45C (크롬도금), 나일론 및 페놀수지



단위:mm

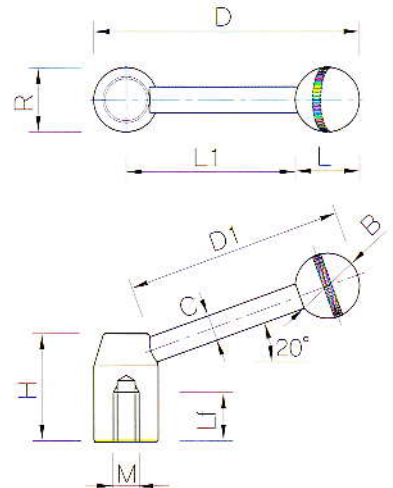
TYPE	D	D1	H	L	L1	C	B	R
CL 32	119	97	21	43	43	8	32	19
CL 40	125	105	25	50	35	10	40	21
CL 50	156	131	28	65	42	12	50	23

WJs

TL 인장레버

Tension Grip

*재질 : S45C(크롬도금), 나일론 및 페놀수지

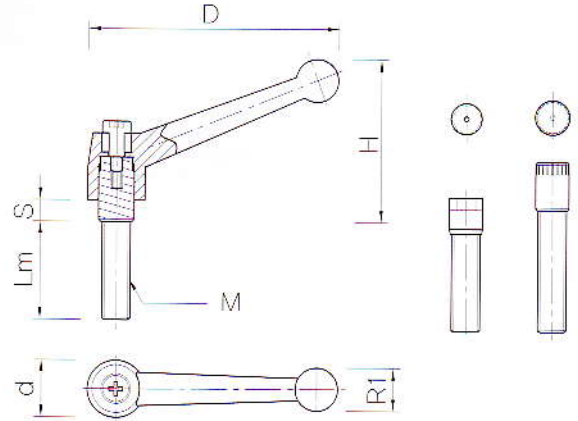
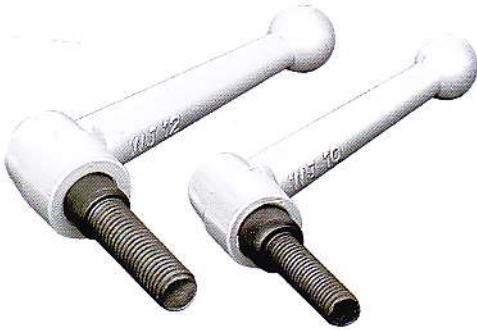


단위:mm

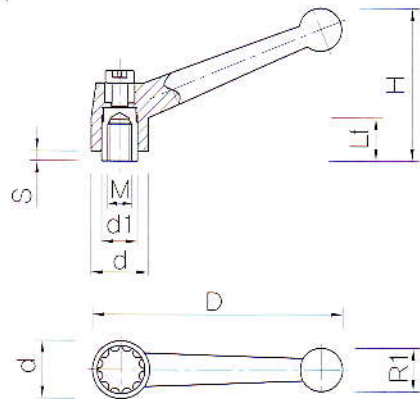
TYPE	D	D1	H	L	L1	R	C	B	Lf	M
TL 20	86	68	33	20	56	20	8	20	15	6×1.0
TL 22	87	68	42	20	56	22	8	20	15	8×1.25
TL 25	85	65	47	25	47	25	10	25	18	10×1.5
TL 28	100	77	50	30	56	28	12	30	20	12×1.75
TL 32	138	113	52	30	92	32	12	30	20	16×2.0

*재 질 : 아연합금, 은색도장

CLB-C 크램프 레버 볼트 원형 (Cramp Lever Bolt)



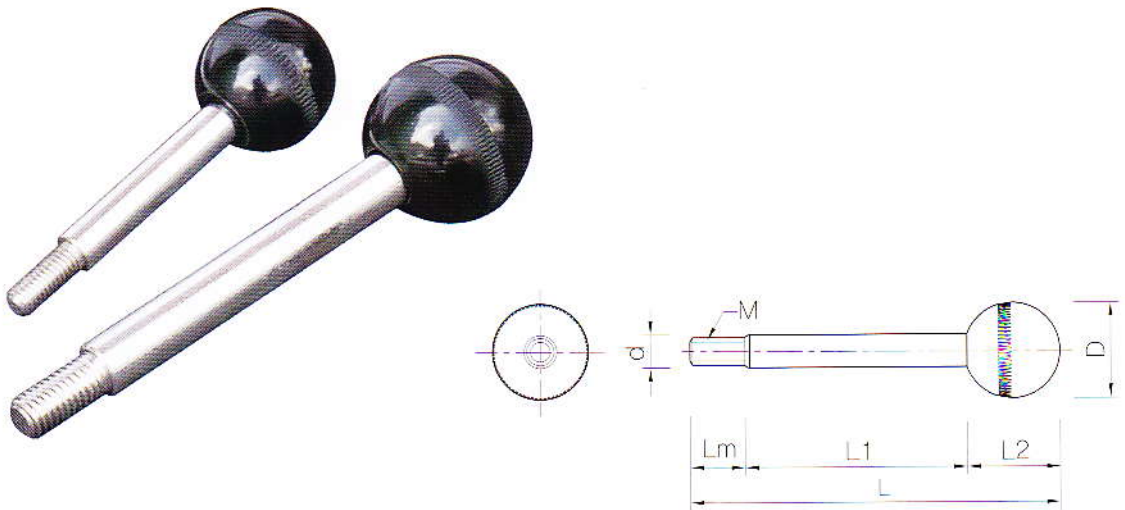
CLN-C 크램프 레버 너트 원형 (Cramp Lever Nut)



단위:mm

TYPE	D	H	S	Lm	R1	TYPE	S1	Lf	d	d1	M
CLB-C 4	50	32	4	15,20,25	11	CLN-C 4					4×0.7
CLB-C 5	50	32	4	15,20,25	11	CLN-C 5	5	10	14	10	5×0.8
CLB-C 6	50	32	4	15,20,25,30,40	11	CLN-C 6	5	10	14	10	6×1.0
CLB-C 8	75	40	6	20,30,40	16	CLN-C 8	8	10	17	13	8×1.25
CLB-C10	93	54	9	25,35,45	17	CLN-C10	9	18	22	16	10×1.5
CLB-C12	107	60	10	40,50,60	19	CLN-C12	12	21	25	16	12×1.75
CLB-C16	107	60	10	40,50,60	19	CLN-C16					16×2.0

*재질 : 페놀수지, S41C(크롬도금)



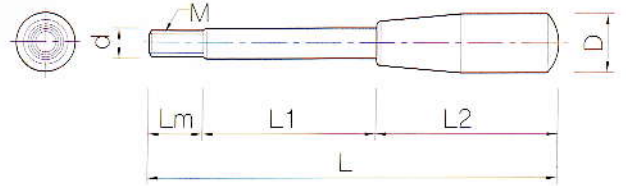
단위:mm

TYPE	D	L	L1	L2	d	Lm	M
LG 6	25	60,80,90	20,40,50	25	8	15	6×1.0
LG 8	30	80,100,120,150	30,50,70,100	30	10	20	8×1.25
LG 10	35	85,105,135,155,175	30,50,80,100,120	35	12	20	10×1.5
LG 12	40	115,145,165,205,265	50,80,100,140,200	40	14	25	12×1.75

WJs**XLG 레버 손잡이**

Lever Grip

*재질 : 페놀수지 및 나일론 , S41C(크롬도금)



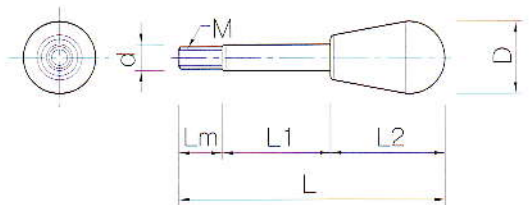
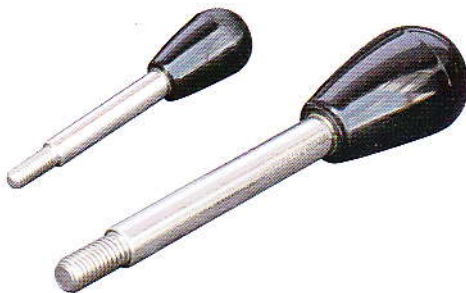
단위:mm

TYPE	D	L	L1	L2	d	Lm	M
XLG 6	19	78,98,108	20,40,50	43	8	15	6×1.0
XLG 8	21	100,120,140,170	30,50,70,100	50	10	20	8×1.25
XLG 10	23	115,135,165,185,205	30,50,80,100,120	65	12	20	10×1.5
XLG 12	27	159,189,209,249,309	50,80,100,140,200	84	14	25	12×1.75

WJs**CLG 레버 손잡이**

Cylindroid Lever Grip

*재질 : 페놀수지 및 나일론 , S41C(크롬도금)



단위:mm

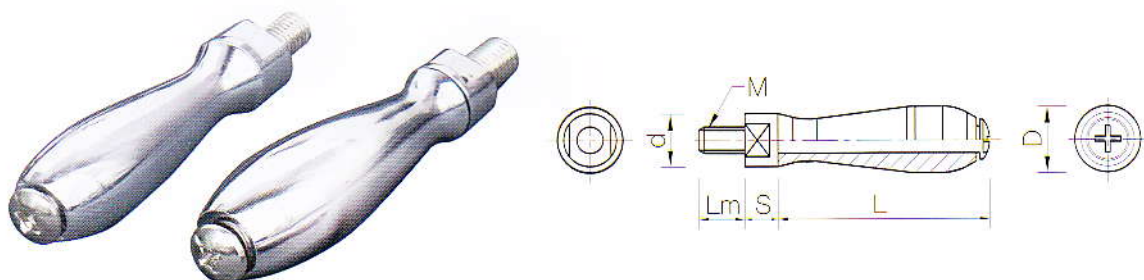
TYPE	D	L	L1	L2	d	Lm	M
CLG 6	20	66,86,96	20,40,50	31	8	15	6×1.0
CLG 8	26	91,111,131,161	30,50,70,100	41	10	20	8×1.25
CLG 10	33	103,123,153,173,193	30,50,80,100,120	53	12	20	10×1.5
CLG 12	38	142,172,192,232,292	50,80,100,140,200	67	14	25	12×1.75

WJs

CG 쇠손잡이 회전형

Casting Grip

*재질 : 아연합금(크롬도금), S100(크롬도금)



단위:mm

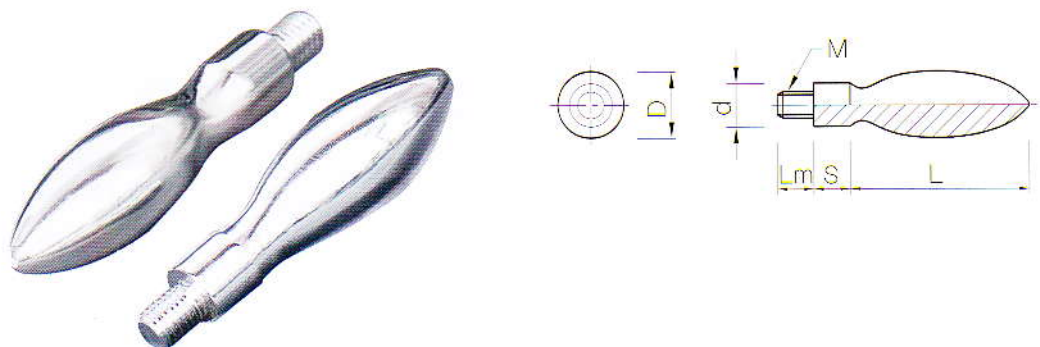
TYPE	D	L	S	Lm	d	M
CG 6	16	44	10	10	13	6×1.0
CG 8	20	63	10	15	16	8×1.25
CG 10	25	76	10	18	17	10×1.5
CG 12	31	96	12	20	21	12×1.75

WJs

CGS 쇠손잡이 고정형

Steel Grip

*재질 : S45C(크롬도금)



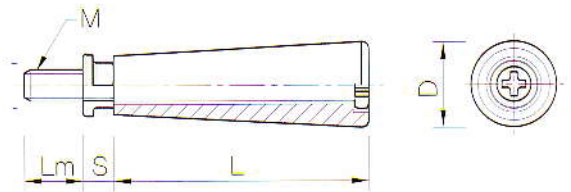
단위:mm

TYPE	D	L	S	Lm	d	M
CGS 6	16	43	8	10	10	6×1.0
CGS 8	20	54	11	10	13	8×1.25
CGS 10	25	68	12	15	16	10×1.5
CGS 12	31	86	14	20	20	12×1.75

WJs PG 플라스틱 손잡이

Plastic Fold Grip

*재질 : 나일론(흑), S10C



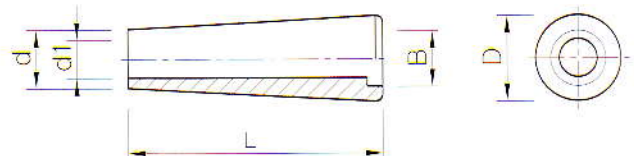
단위:mm

TYPE	D	L	S	Lm	d	M
PG 6	18	43	6	15	13	6×1.0
PG 8	22	53	8	15	16	8×1.25
PG 10	25	69	10	15	16	10×1.5
PG 12	31	87	11	20	23	12×1.75

WJs PGC 플라스틱 손잡이 뚜껑

Plastic Grip Cap

*재질 : 나일론(흑)



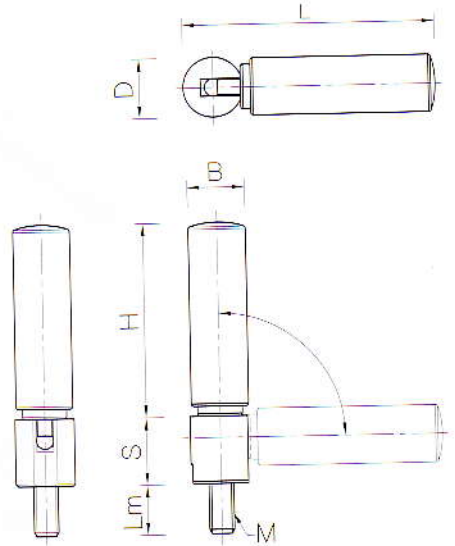
단위:mm

TYPE	D	L	B	d	d1
PGC 6	18	43	10	13	7
PGC 8	22	53	14	16	9
PGC 10	25	69	15	16	11.5
PGC 12	31	87	19	23	13

WJs**FG 플라스틱 꺾기 손잡이**

Plastic Fold Grip

*재질 : 나일론(흑), 아연합금(크롬도금), S10C



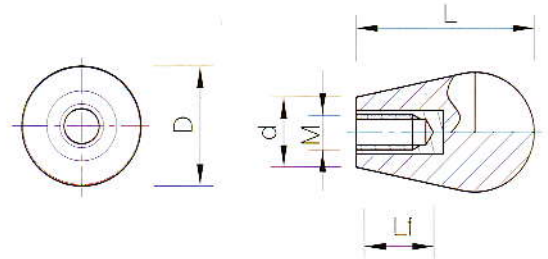
단위:mm

TYPE	D	L	H	S	Lm	B	M
FG 6	19	96	78	25	20	23	6×1.0
FG 8	19	96	78	25	20	23	8×1.25
FG 10	19	96	78	25	20	23	10×1.5
FG 12	19	96	78	25	20	23	12×1.75

WJs COG 오지 손잡이

Oval Grip

*재질 : 나일론(흑),신주



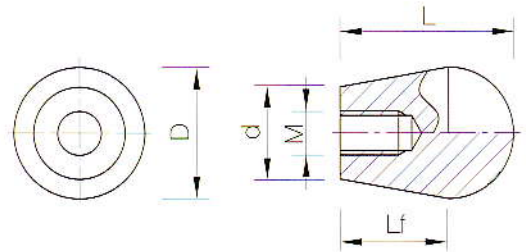
단위:mm

TYPE	D	L	Lf	d	M
COG 6	20	31	17	12	6×1.0
COG 8	26	41	17	16	8×1.25
COG 10	33	53	18	19	10×1.5
COG 12	38	67	19	21	12×1.75

WJs TG 삼각 손잡이

Triangle Grip

*재질 : 나일론(흑,적)



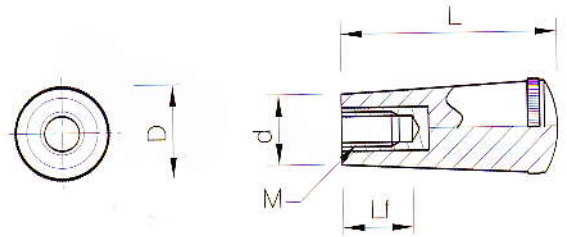
단위:mm

TYPE	D	L	Lf	d	M
삼각 6	27	33	19	18	6 x 1.0
삼각8 小	27	33	19	18	8 x 1.25
삼각8 大	30	40	27	21	8 x 1.25
삼각 3/8	30	40	27	21	3/8 x 16
삼각 10	30	40	27	21	10 x 1.5
삼각 12	30	40	27	21	12 x 1.75
삼각 1/2	30	40	27	21	1/2 x 12

WJs OG 오지 손잡이

Oval Grip

*재질 : 나일론(흑),신주



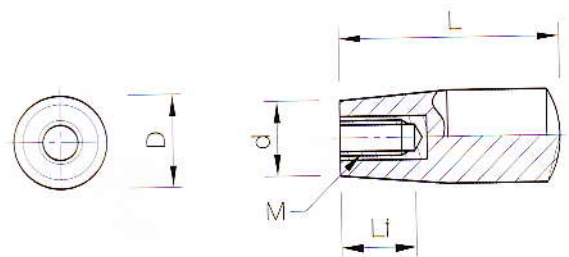
단위:mm

TYPE	D	L	Lf	d	M
OG 6	21	43	17	16	6×1.0
OG 8	21,26	50,79	18,21	16,21	8×1.25
OG 10	27,26	63,79	19,21	18,21	10×1.5
OG 12	27,26	66,79	20,21	18,21	12×1.75

WJs XOG 배구오지 손잡이

Triangle Grip

*재질 : 페놀수지 및 나일론(흑),신주



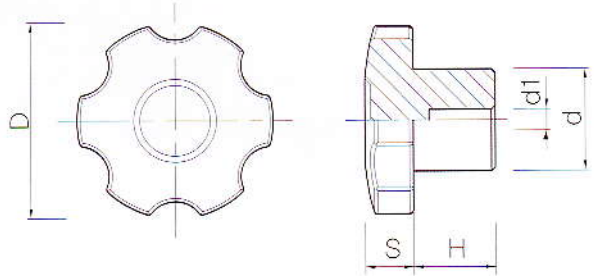
단위:mm

TYPE	D	L	Lf	d	M
XOG 5	19	43	18	15	5×0.8
XOG 6	19	43	18	15	6×1.0
XOG 8	21,27	50,77	19,20	17,18	8×1.25
XOG 10	23,27	65,77	20,20	19,18	10×1.5
XOG 12	27,27	84,77	21,20	21,18	12×1.75

WJs AK 알루미늄 육각 노브

Aluminum Six Knob

*재질 : 알루미늄 합금(크롬도금)



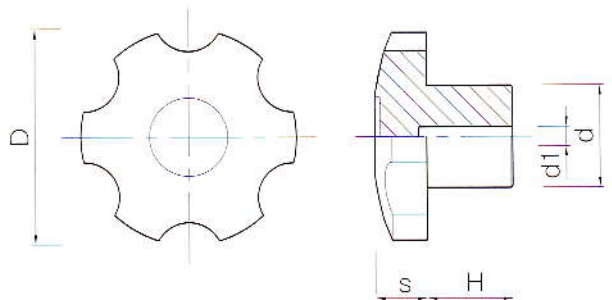
단위:mm

TYPE	D	H	S	d	d1
AK 36	36	15	8	21	5
AK 50	50	21	13	26	5
AK 64	64	25	15	32	7
AK 80	80	33	17	39	7

WJs CSK 주물 육각 노브

Casting Six Knob

*재질 : 주물(크롬도금)



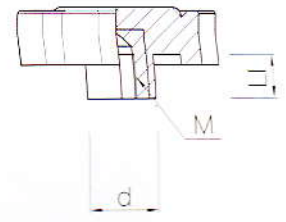
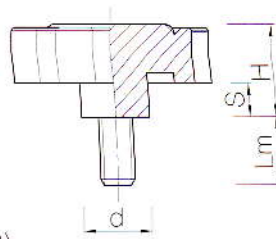
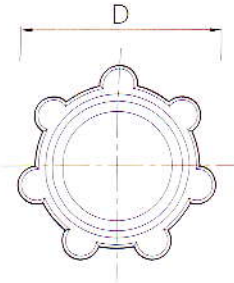
단위:mm

TYPE	D	H	S	d	d1
CSK 36	36	17	9	21	6
CSK 55	55	22	14	26	5
CSK 64	64	24	14	33	5
CSK 80	80	35	16	39	5

WJs**CHKB 국화노브 볼트형**

Chrysanthemum Knob Bolt

*재질 : 나일론(흑), S10C, 황동



CHKB 국화노브 볼트 (Chrysanthemum Knob Bolt)

CHKN 국화 노브 너트 (Chrysanthemum Knob Nut)

CHKB

CHKN

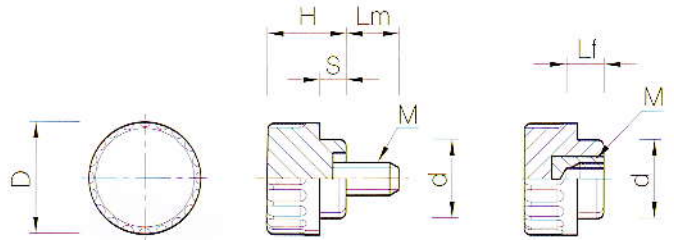
단위:mm

TYPE	D	H	S	Lm	TYPE	Lf	d	M
CHKB10	57	25	8	20.30.40	CHKN10	16	21	10×1.5

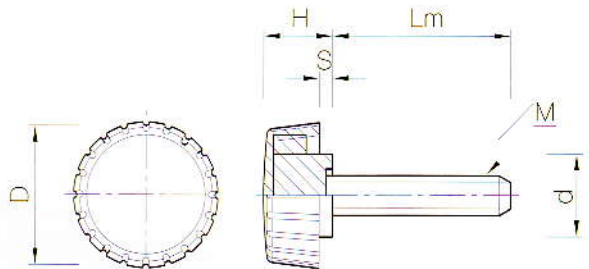
*재질 : 나일론(흑), S10C, 황동



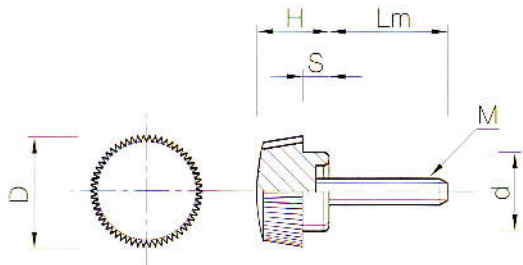
CK-1



CK-2



CK-3



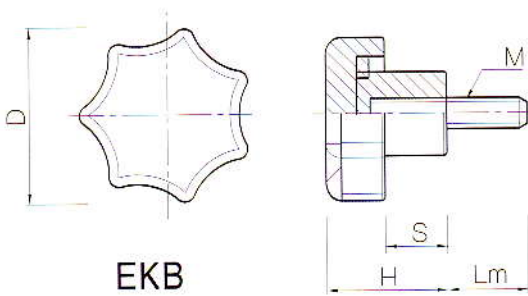
CK 원형 노브 볼트 (Circle Knob Bolt)

CKN 원형 노브 너트 (Circle Knob Nut)

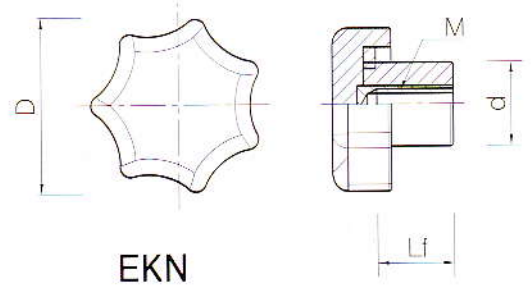
단위:mm

TYPE	D	H	S	d	Lm	TYPE	M
CK 1-4	17	12	4	12	10,15,20	CKN 1-4	4×0.7
CK 1-5	17	12	4	12	10,15,20,25	CKN 1-5	5×0.8
CK 2-6	22	10	1.5	12.5	10,20,25,30	CKN 1-6	6×1.0
CK 3-4	16	11	4	12			
CK 3-5	16	11	4	12			

*재질 : 나일론(흑), S10C, 황동



EKB



EKN

EKB 엔지니어링 볼트 (Engineering Knob Bolt)

EKN 엔지니어링 너트 (Engineering Nut Bolt)

단위:mm

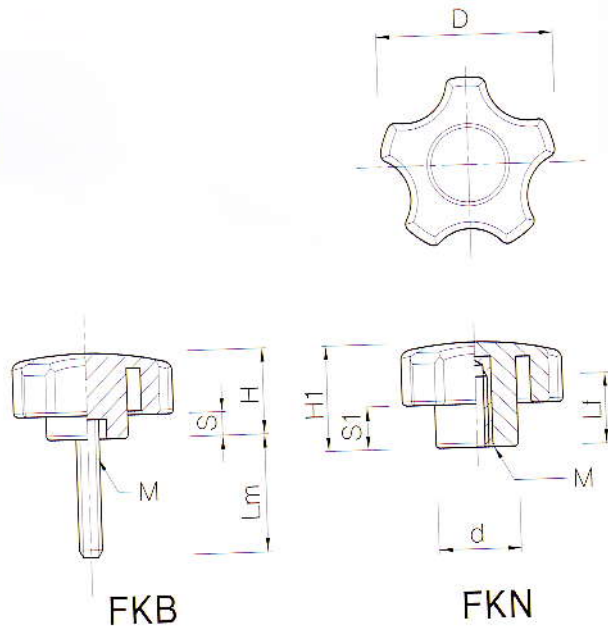
TYPE	D	H	S	Lm	TYPE	Lf	d	M
EKB47-6	47	34	18	20,30,40	EKN47-6	25	23	6×1.0
EKB47-8	47	34,54	18,38	20,30,40	EKN47-8	25	23	8×1.25
EKB47-10	47	34	18	20,30,40	EKN47-10	25	23	10×1.5
EKB56-8	56	39	20	30,40,50	EKN56-8	30	27	8×1.25
EKB56-10	56	39,59	20,40	30,40,50	EKN56-10	30	27	10×1.5
EKB56-12	56	39	20	30,40,50	EKN56-12	30	27	12×1.75
EKB67-10	67	42	21	30,40,50	EKN67-10	30	29	10×1.5
EKB67-12	67	42	21	40,50,60	EKN67-12	30	29	12×1.75

WJs

FKB 십자 노브 볼트형

Five Knob Bolt

*재질 : 나일론(흑), S10C, 황등



FKB 십자노브 볼트(Five Knob Bolt)

FKN 십자노브 너트(Five Knob Nut)

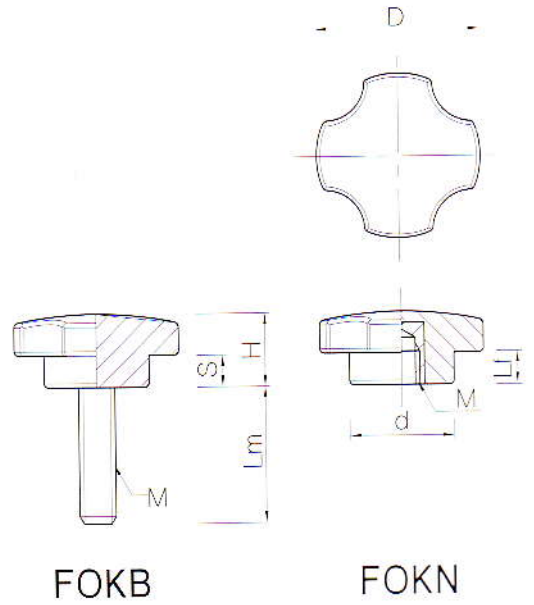
단위:mm

TYPE	D	H	S	Lm	TYPE	H1	S1	Lf	d	M
FKB 6	44	22	6	20,30,40	FKN 6	27	11	18	21	6×1.0
FKB 8	44	22	6	20,30,40	FKN 8	27	11	18	21	8×1.25
FKB 10	52	26	10	20,30,40,50	FKN 10	31	14	23	24	10×1.5
FKB 12	60	26	10	30,40,50,60	FKN 12	31	14	24	25	12×1.75

WJs**FOKB 사각노브 볼트형**

Four Knob Bolt

*재질 : 나일론(흑) 및 페놀수지, S10C, 황동



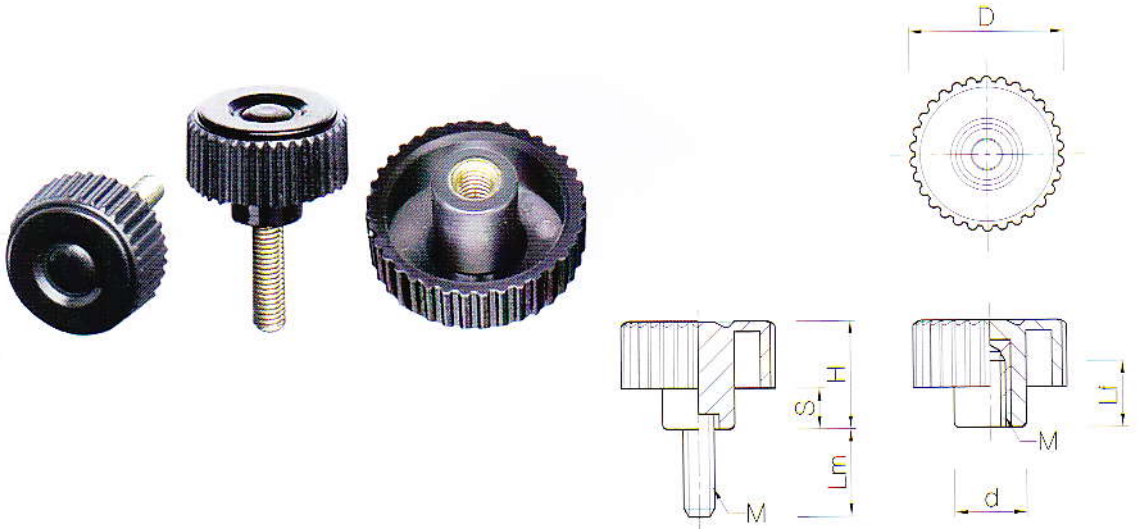
FOKB 사각 노브 볼트(Four Knob Bolt)

FOKN 사각 노브 너트(Four Knob Nut)

단위:mm

TYPE	D	H	S	Lm	TYPE	Lf	d	M
FOKB 5	30	14	7	15,20,30	FOKN 5	9	16	5 x 0.8
FOKB 6	36	17	8	20,30,40	FOKN 6	13	22	6 x 1.0
FOKB 8	36	17	8	20,30,40	FOKN 8	13	22	8 x 1.25

*재질 : 나일론(흑), S10C, 황동



GKB 그릴 노브 볼트(Grill Knob Bolt)

GKN 그릴 노브 너트(Grill Knob Nut)

GKB

GKN

단위:mm

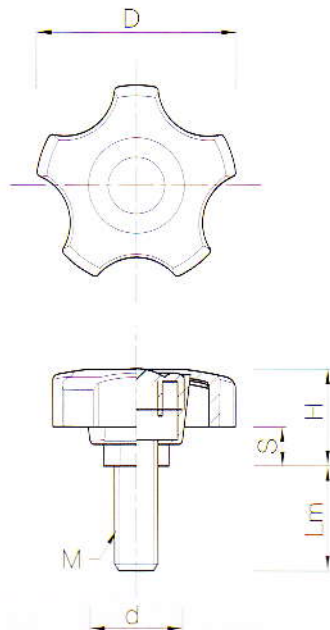
TYPE	D	H	S	Lm	M	TYPE	Lf	d	M
GKB 22-4	22	13	5	10,15,20	4×0.7	GKN 22-4	9	10	4×0.7
GKB 22-5	22	13	5	10,20,25	5×0.8	GKN 22-5	9	10	5×0.8
GKB 30-5	30	22	8	10,20,25	5×0.8	GKN 30-5	15	14	5×0.8
GKB 30-6	30	22	8	15,20,30	6×1.0	GKN 30-6	15	14	6×1.0
GKB 40-6	40	22	8	15,20,30	6×1.0	GKN 40-6	16	16	6×1.0
GKB 40-8	40	22	8	20,30,40	8×1.25	GKN 40-8	16	16	8×1.25
GKB 50-8	50	28	12	20,30,40,50	8×1.25	GKN 50-8	16	20	8×1.25
GKB 50-10	50	28	12	30,40,50	10×1.5	GKN 50-10	20	20	10×1.5
GKB 59-10	59	32	14	30,40,50	10×1.5	GKN 59-10	20	22	10×1.5
GKB 69-12	69	38	19	40,50,60	12×1.75	GKN 69-12	20	24	12×1.75

WJs

HKN-B 십자 노브 신형 볼트형

Pentagon Knob New Bolt

*재질 : 나일론(흑), PE(오렌지), S10C



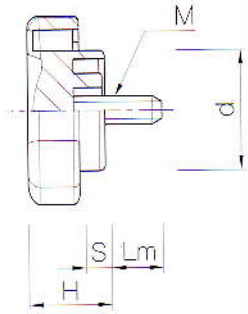
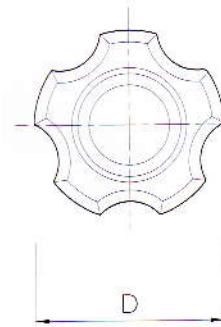
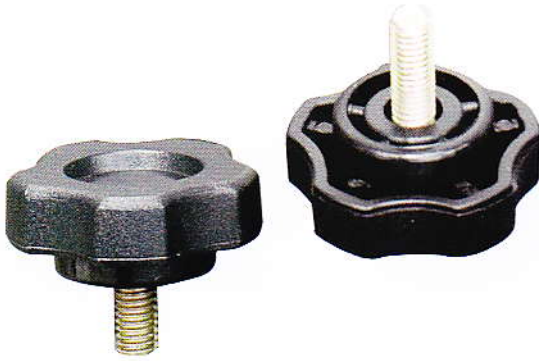
단위:mm

TYPE	D	H	S	d	Lm	M
HKN-B 6	33	22	8	14	15,25,35,45	6×1.0
HKN-B 8	38	25	9	15	25,35,45,55	8×1.25
HKN-B10	46	29	10	21	25,35,45,55	10×1.5
HKN-B12	52	31	12	26	25,35,45,55,65	12×1.75

WJs**KK 꽃 손잡이**

Pentagon Knob Bolt

*재질 : 나일론(흑), S10C



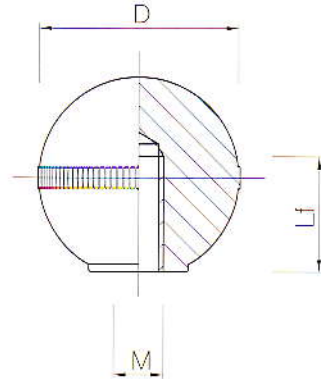
단위:mm

TYPE	D	H	S	d	Lm	M
KK꽃손잡이5	34	14	5	22	10,15,20,25	5×0.8
KK꽃손잡이6	34	14	5	22	10,15,20,30,40	6×1.0

WJs**PB 배구볼 흑색**

Phenol Ball Black

*재질 : 페놀수지



PB 배구볼 흑색(Phenol Ball Black)

PR 배구볼 적색 (Phenol Ball Red)

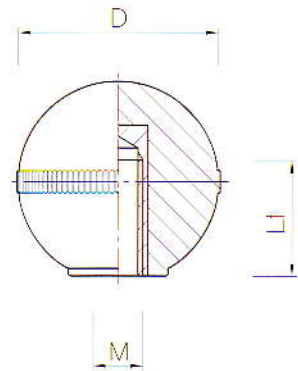
단위:mm

TYPE	D	Lf	TYPE	M
PB 20-5	20	16	PR 20-5	5×0.8
PB 20-6	20	16	PR 20-6	6×1.0
PB 25-6	25	18	PR 25-6	6×1.0
PB 25-8	25	18	PR 25-8	8×1.25
PB 30-8	30	20	PR 30-8	8×1.25
PB 30-10	30	20	PR 30-10	10×1.5
PB 35-8	35	24	PR 35-8	8×1.25
PB 35-10	35	24	PR 35-10	10×1.5
PB 35-12	35	24	PR 35-12	12×1.75
PB 40-10	40	26	PR 40-10	10×1.5
PB 40-12	40	26	PR 40-12	12×1.75

WJs**CUB 빼구 신주볼 흑색**

Phenol Brass Ball Black

*재질 : 페놀수지, 황동



CUB 빼구 신주볼 흑색(Phenol Brass Ball Black)

CUR 빼구 신주볼 적색 (Phenol Brass Ball Red)

단위:mm

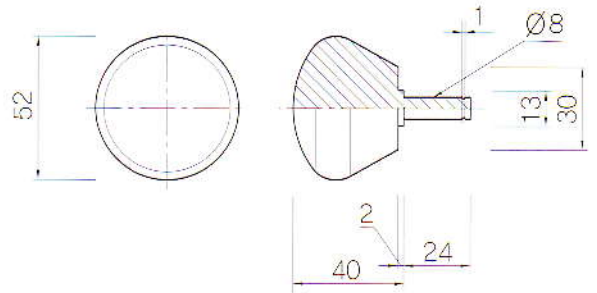
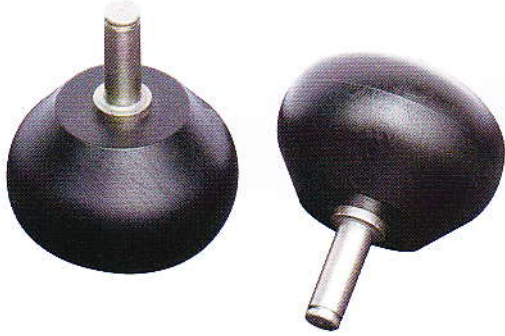
TYPE	D	Lf	TYPE	M
CUB 20-5	20	16	CUR 20-5	5×0.8
CUB 20-6	20	16	CUR 20-6	6×1.0
CUB 25-6	25	18	CUR 25-6	6×1.0
CUB 25-8	25	18	CUR 25-8	8×1.25
CUB 30-8	30	20	CUR 30-8	8×1.25
CUB 30-10	30	20	CUR 30-10	10×1.5
CUB 35-8	35	24	CUR 35-8	8×1.25
CUB 35-10	35	24	CUR 35-10	10×1.5
CUB 35-12	35	24	CUR 35-12	12×1.75
CUB 40-10	40	26	CUR 40-10	10×1.5
CUB 40-12	40	26	CUR 40-12	12×1.75

WJs

PKC 원형 파워 노브

Circle Power Knob

*재질 : 나일론(흑), S10C

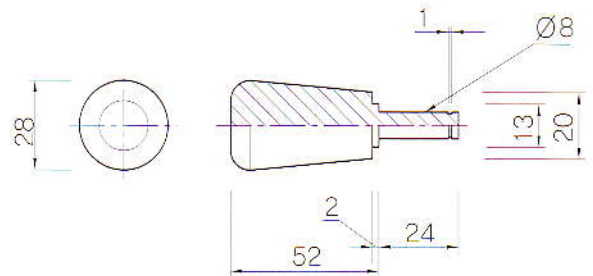
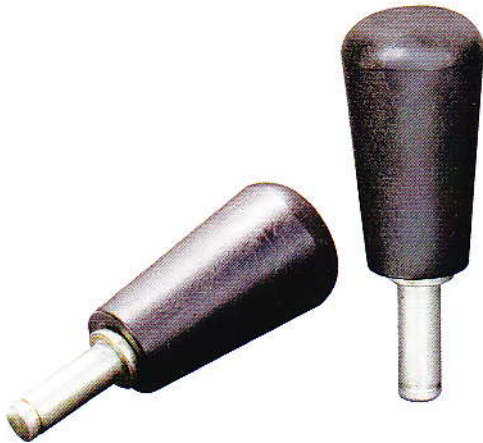


WJs

PKT 삼각 파워 노브

Three Power Knob

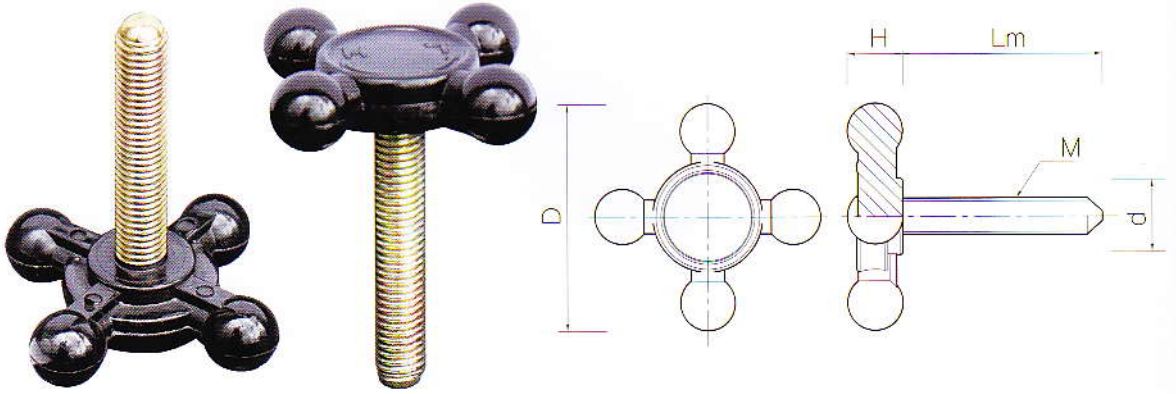
*재질 : 나일론(흑), S10C



WJs**RSB 조절나사 볼트형**

Regulating Screw Bolt

*재질 : 나일론(흑), S10C



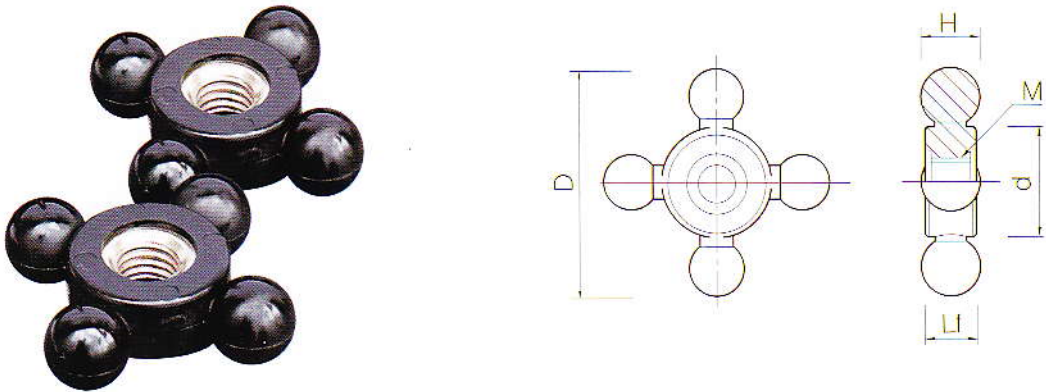
단위:mm

TYPE	D	H	d	Lm	M
조절나사볼트 12	73	17	36	65	12 x 1.75

WJs**RSN 조절나사 너트 관통형**

Regulating Screw Nut Open

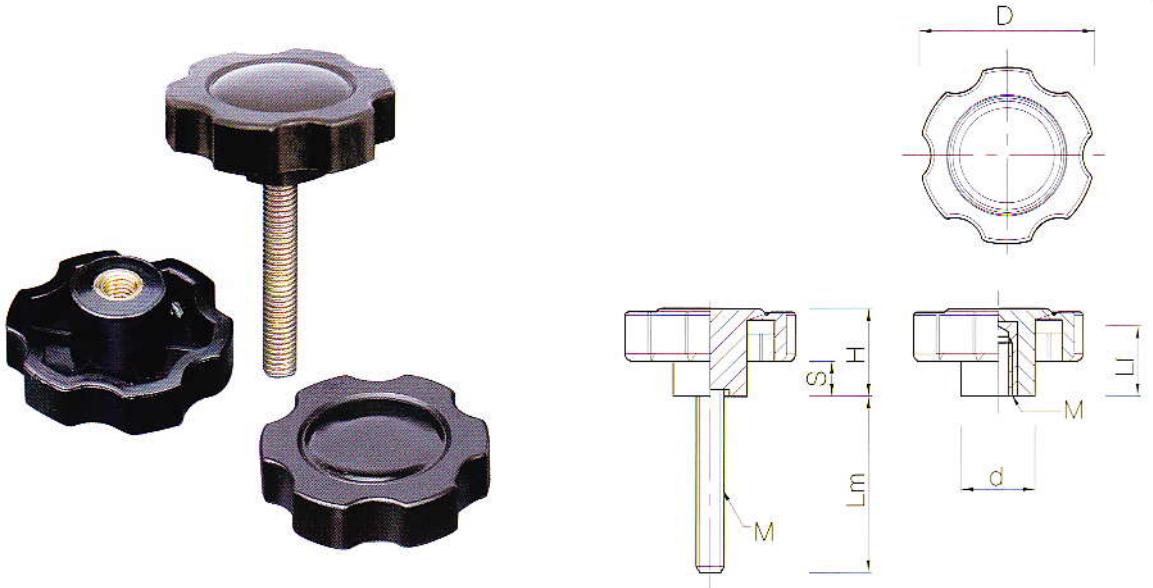
*재질 : 나일론(흑), S10C



단위:mm

TYPE	D	H	d	Lf	M
조절나사너트 12	55	15	28	10	12 x 1.75

*재질 : 나일론(흑), S10C, 황동



SIKB 식스 노브 볼트(Six Knob Bolt)

SIKN 식스 노브 너트(Six Knob Nut)

SIKB

SIKN

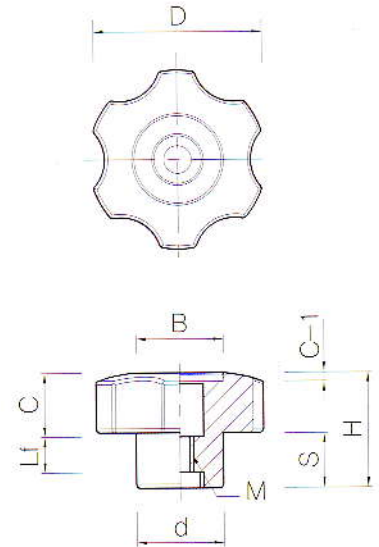
단위:mm

TYPE	D	H	S	Lm	TYPE	Lf	d	M
SIKB 8	50	24	10	20.30.40.50	SIKN 8	18	21	8×1.25
SIKB 10	50	24	10	30.40.50.60	SIKN 10	18	21	10×1.5

WJs**SIXN-1 식스노브 너트 관통형**

Six Knob Nut Open

*재질 : 나일론(흑), S10C, 황동



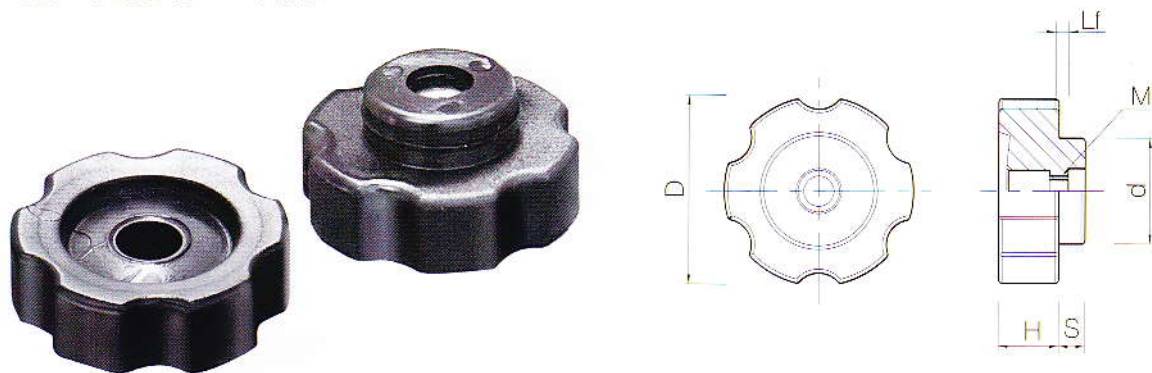
단위:mm

TYPE	D	H	S	C	c-1	B	b	Lf	M
SIXN1-5	40	30	13	17	3	18	20	4	5×0.8
SIXN1-6	40	30	13	17	3	18	20	5	6×1.0
SIXN1-8	45	33	15	18	3	22	22	8	8×1.25
SIXN1-10	50	35	16	19	3.5	26	26	9	10×1.5
SIXN1-12	60	41	21	20	3.5	30	28	11	12×1.75

WJs SIXN-2 식스 노브 너트 관통형

Six Knob Nut Open

*재질 : 나일론(흑), S10C, 황동



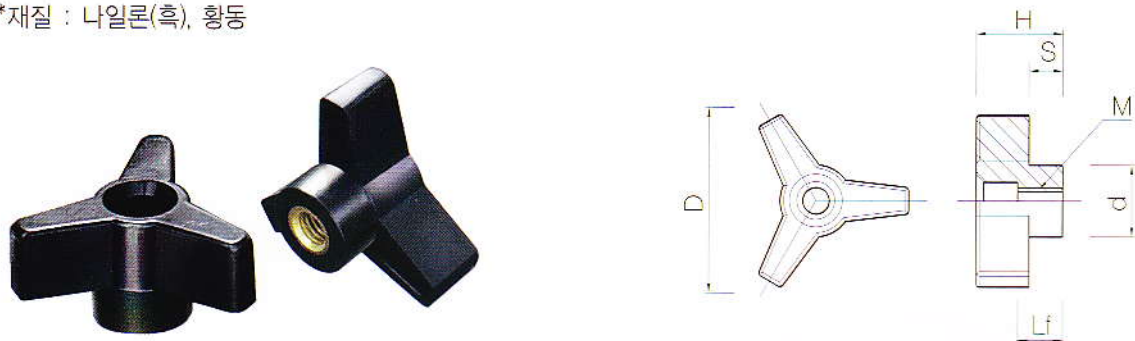
단위:mm

TYPE	D	H	S	Lf	d	B	M
SIKN2-8	50	25	10	6.5	28	30	8×1.25
SIKN2-10	50	25	10	8	28	30	10×1.5
SIKN2-12	50	25	10	10	28	30	12×1.75

WJs TKN 삼각 노브 너트 관통형

Three Knob Nut Open

*재질 : 나일론(흑), 황동



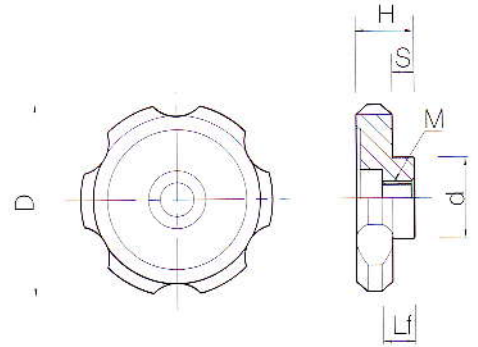
단위:mm

TYPE	D	H	S	Lf	d	M
TKN8	45	24	9	15	19	8×1.25

WJs SIXN-3 식스 노브 너트 관통형

Six Knob Nut Open

*재질 : 나일론, S10C



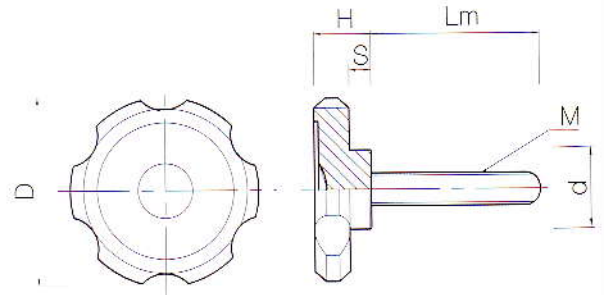
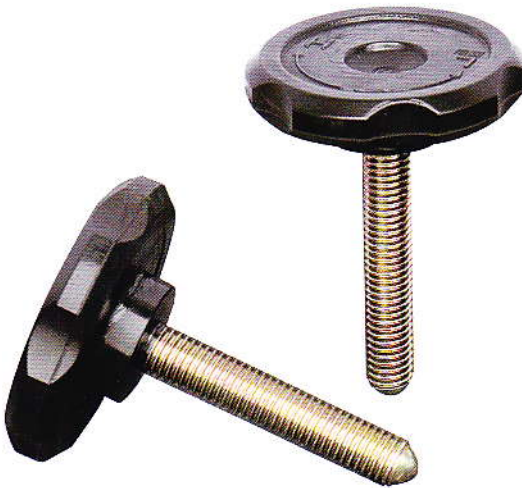
단위:mm

TYPE	D	H	S	d	Lf	M
SIXN3-10	57	18	7	26	11	10×1.5
SIXN3-12	57	18	7	26	11	12×1.75

WJs SIXB 식스 노브 볼트형

Six Knob Bolt

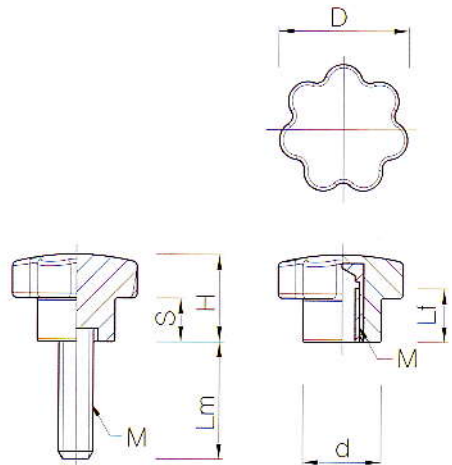
*재질 : 나일론, S10C



단위:mm

TYPE	D	H	S	d	Lm	M
SIXB 12	68	20	9	30	60,65,70	12×1.75

*재질 : 나일론(흑), S10C, 황동



SKB 세븐 노브 볼트(Seven Knob Bolt)

SKN 세븐 노브 너트(Seven Knob Nut)

SKB

SKN

단위:mm

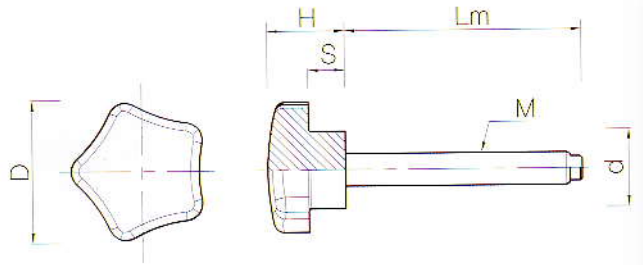
TYPE	D	H	S	Lm	TYPE	Lf	d	M
SKB 24-4	24	19	10	20,30,40	SKN 24-4	15	16	4×0.7
SKB 24-5	24	19	10	20,30,40	SKN 24-5	15	16	5×0.8
SKB 24-6	24	19	10	20,30,40	SKN 24-6	15	16	6×1.0
SKB 30-5	30	23	12	20,30,40	SKN 30-5	17	19	5×0.8
SKB 30-6	30	23	12	20,30,40	SKN 30-6	17	19	6×1.0
SKB 30-8	30	23	12	20,30,40	SKN 30-8	17	19	8×1.25
SKB 38-6	38	31	15	20,30,40	SKN 38-6	24	22	6×1.0
SKB 38-8	38	31	15	20,30,40	SKN 38-8	24	22	8×1.25
SKB 38-10	38	31	15	20,30,40	SKN 38-10	24	22	10×1.5
SKB 47-10	47	36	16	30,40,50	SKN 47-10	28	29	10×1.5
SKB 47-12	47	36	16	30,40,50	SKN 47-12	28	29	12×1.75

WJs

STKB 셔터 노브 볼트형

Shutter Knob Bolt

*재질 : 나일론(흑), S10C



단위:mm

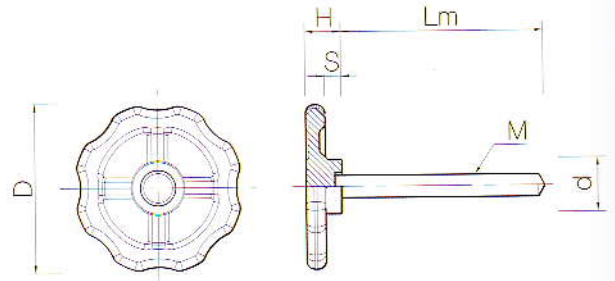
TYPE	D	H	S	Lm	d	M
STKB 5/8	36	17	8	115,135	22	5/8 x 11

WJs

PRKB 고추 롤러 손잡이 볼트형

Pepper Roller Knob Bolt

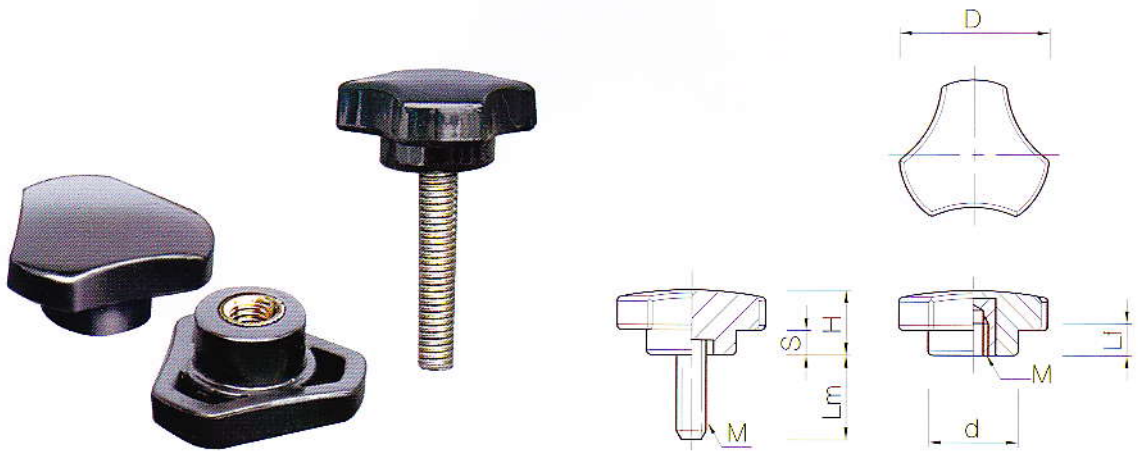
*재질 : 복합 PP(흑), S10C



단위:mm

TYPE	D	H	S	Lm	d	M
PRKB 3/8	123	26	14	125,150	40	3/8 x 16

*재질 : 나일론(흑) 및 페놀수지, S10C, 황동



TRKB 삼각 노브 볼트(Three Knob Bolt)

TRKN 삼각 노브 너트(Three Knob Nut)

TRKB

TRKN

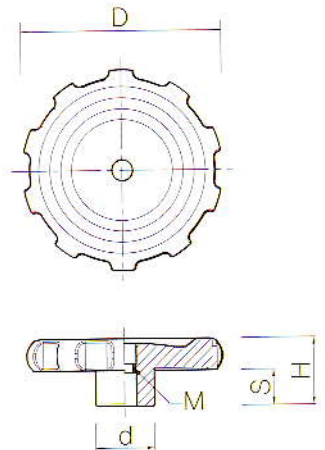
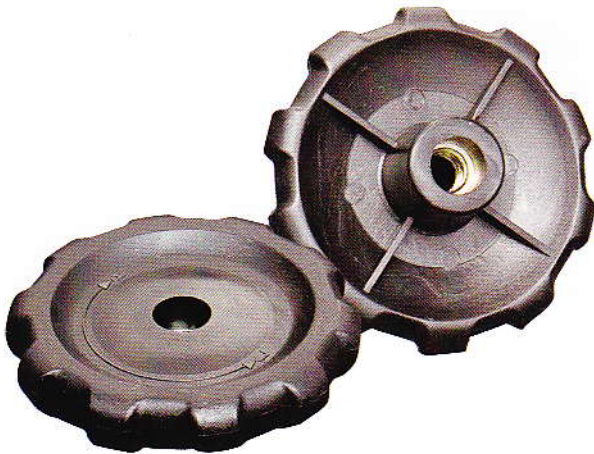
단위:mm

TYPE	D	H	S	Lm	TYPE	Lf	d	M
TRKB 5	30	14	5	15,20,25	TRKN 5	10	18	5×0.8
TRKB 6	30	14	5	15,20,25	TRKN 6	10	18	6×1.0
TRKB 8	39	19	10	15,20,30	TRKN 8	15	19	8×1.25

WJs**WMKN 목공기계 손잡이 너트형**

Wood working Machine Knob Nut

*재질 : 나일론(흑), S10C



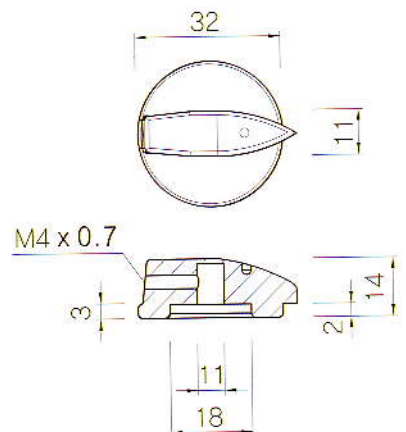
단위:mm

TYPE	D	H	S	d	M
WMKN 12	84	34	18	29	12 x 1.75

WJs**SWK 스위치 손잡이**

Switch Knob

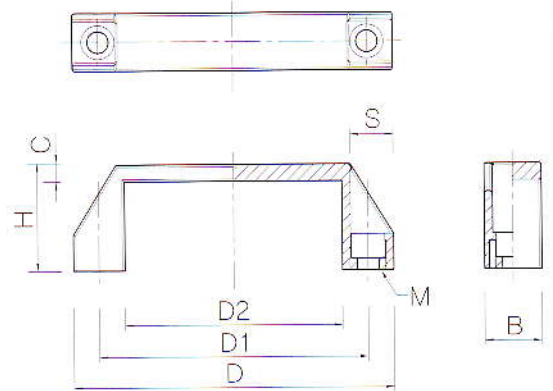
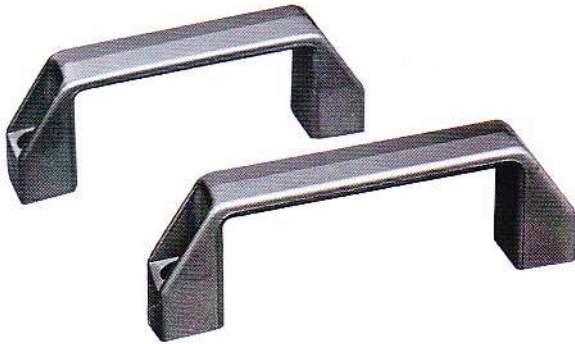
*재질 : 나일론(흑), 황동



WJs**AGS 아치 그립**

Arch Grip

*재질 : 나일론(흑)



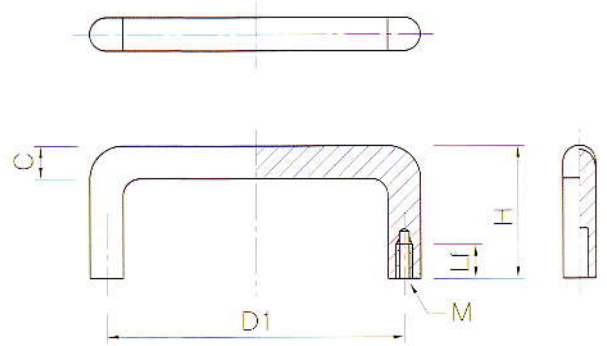
단위:mm

TYPE	D	D1	D2	H	B	C	S	M
AGS 110	107	91	70	37	20	6	15	6M Bolt
AGS 134	130	110	91	43	22	7	18	8M Bolt
AGS 150	145	126	102	47	22	8	18	8M Bolt
AGS 175	175	152	128	48	23	8	16	8M Bolt

WJs UH1 U자 손잡이

U-Handle

*재질 : S45C(크롬도금)



단위:mm

TYPE	D1	H	C	Lf	M
UH 1-6	60,90	23	6	6	2.6×0.45
UH 1-8	48,58,75,95,105,125,150	28	8	7	4×0.7
UH 1-10	100,125,150,180,200,250	40	10	11	6×1.0
UH 1-12	125,156,200,250	50	12	10	6×1.0

WJs UHS1 U자 손잡이

U-Handle

*재질 : SUS 304(광택연마)

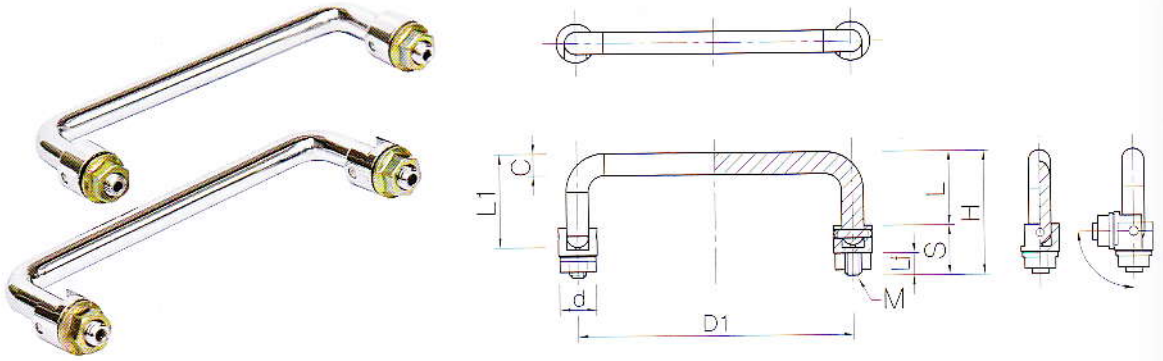
단위:mm

TYPE	D1	H	C	Lf	M
UHS1-8	75,95,105,125,150	28	8	7	4×0.7
UHS1-10	100,125,150,180,200,250	40	10	11	6×1.0
UHS1-12	125,156,200	50	12	10	6×1.0

WJs UH2 U자 손잡이

U-Handle

*재질 : S45C(크롬도금, 무광크롬도금)



단위:mm

TYPE	D1	H	L	L1	C	S	Lf	d	M
UH2-6	50,75,90	32	17	19	6	15	7	10	5×0.8
UH2-8	90,100	41	22.5	26	8	16	8	14	6×1.0
UH2-10	100,125,150	58.5	30	35	10	28	14	17.5	10×1.5

WJs UHS2 U자 손잡이

U-Handle

*재질 : SUS 304(광택연마)

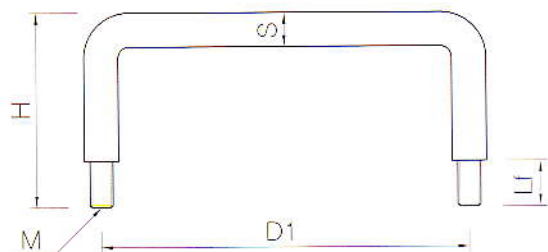
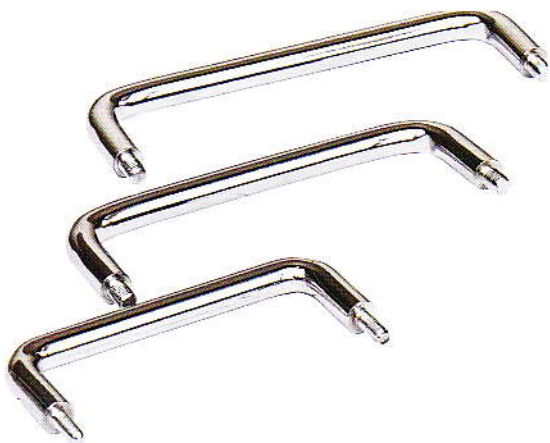
단위:mm

TYPE	D1	H	L	L1	C	S	Lf	d	M
UHS2-6	50,75,90	32	17	19	6	15	7	10	5×0.8
UHS2-8	90,100	41	22.5	26	8	16	8	14	6×1.0
UHS2-10	100,125,150	58.5	30	35	10	28	14	17.5	10×1.5

WJs UH3 U자 손잡이

U-Handle

*재질 : S45C(크롬도금)



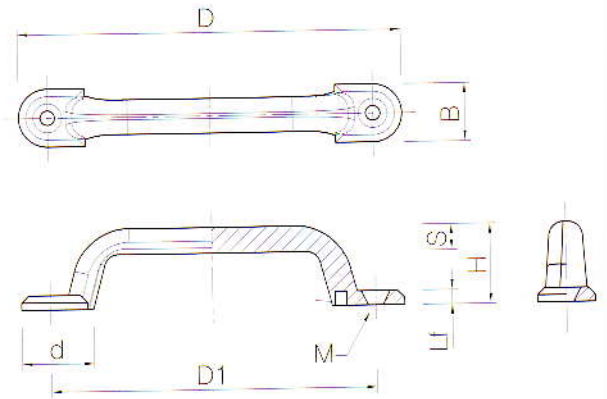
단위:mm

TYPE	D1	H	S	Lf	M
UH3-75	75	31	8	7	5×0.8
UH3-95	95	31	8	7	5×0.8
UH3-105	105	31	8	7	5×0.8
UH3-130	130	31	8	7	5×0.8
UH3-150	150	61	12	13	8×1.25

WJs**UH4 U자 손잡이**

U-Handle

*재질 : 아연합금(크롬도금, 무광크롬도금)



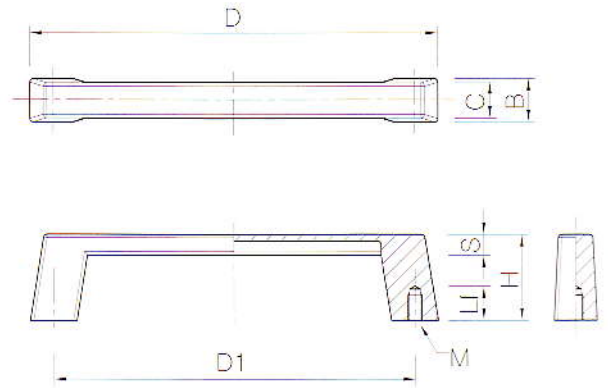
단위:mm

TYPE	D	D1	H	S	B	Lf	d	M
UH4-79	95	79	20	5	15	4	20	5×0.8
UH4-118	133	118	28	7	20	5	23	5×0.8
UH4-140	160	140	32	9	22	6	25	5×0.8
UH4-170	195	170	37	10	25	6	31	5×0.8

WJs UH5 U자 손잡이

U-Handle

*재질 : 아연합금(크롬도금, 흑색도장-BK)



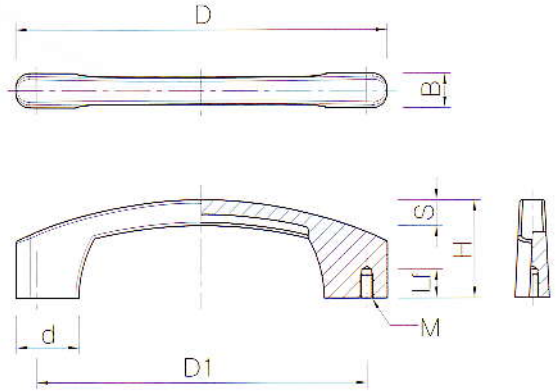
단위:mm

TYPE	D	D1	H	S	B	Lf	C	M
UH5-65	75	65	19	5	10	8	9	4×0.7
UH5-80	90	80	20	5	11	8	10	4×0.7
UH5-100	110	100	25	5	12	8	11	4×0.7
UH5-105	118	105	25	6	13	8	11	4×0.7

WJs**UH6 U자 손잡이**

U-Handle

*재질 : 아연합금(크롬도금, 흑색도장-BK)



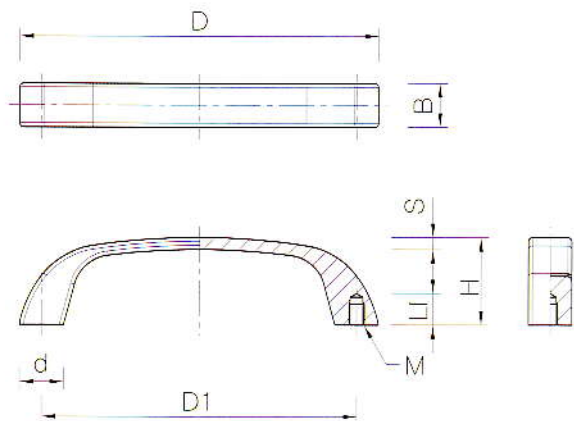
단위:mm

TYPE	D	D1	H	S	B	Lf	d	M
UH6-86	104	86	24	5.5	10	7	17	4×0.7
UH6-102	122	102	31	6	13	8	20	4×0.7

WJs**UH7 U자 손잡이**

U-Handle

*재질 : 아연합금(크롬도금, 흑색도장-BK)



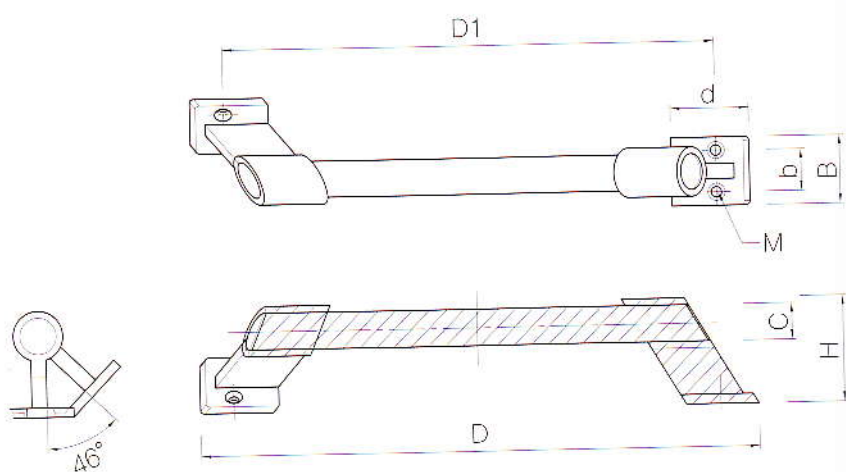
단위:mm

TYPE	D	D1	H	S	B	Lf	d	M
UH7-59	70	59	20	2.8	11	7	10	4×0.7
UH7-79	90	79	22	2.8	11	7	10	4×0.7
UH7-96	109	96	24	4	13	7	13.5	4×0.7

WJs**UH8 U자 손잡이**

U-Handle

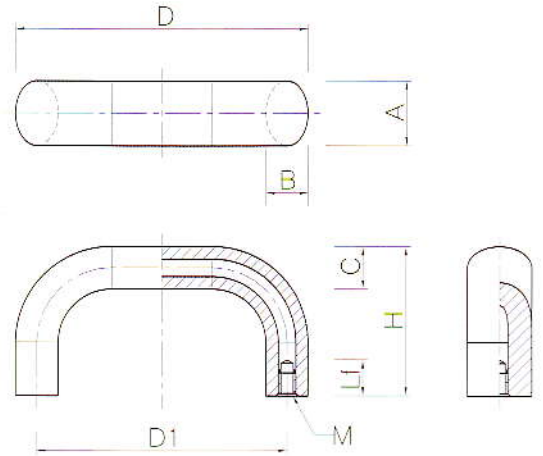
*재질 : 파이프-SUS 304, 브라켓-아연합금(크롬도금)



단위:mm

TYPE	D	D1	H	B	d	b	C	M
UH8-250	290	250	56	35	37	24	19	5.5Ø
UH8-300	340	300	56	35	37	24	19	5.5Ø
UH8-400	440	400	56	35	37	24	19	5.5Ø

*재질 : 알루미늄(흑색도장)



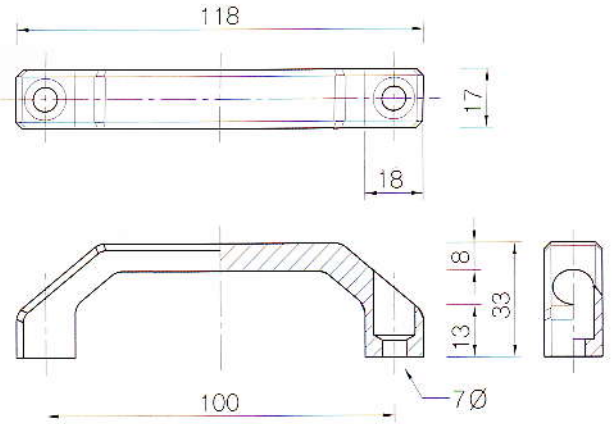
단위:mm

TYPE	D	D1	H	A	B	C	Lf	M
UH9-100	117	100	60	26	17	17	12	M8×1.25
UH9-150	167	150	60	26	17	17	12	M8×1.25
UH9-200	217	200	60	26	17	17	16	M8×1.25
UH9-250	266	250	60	26	17	17	16	M8×1.25
UH9-300	317	300	60	26	17	17	16	M8×1.25

WJs**UH10 U자 손잡이**

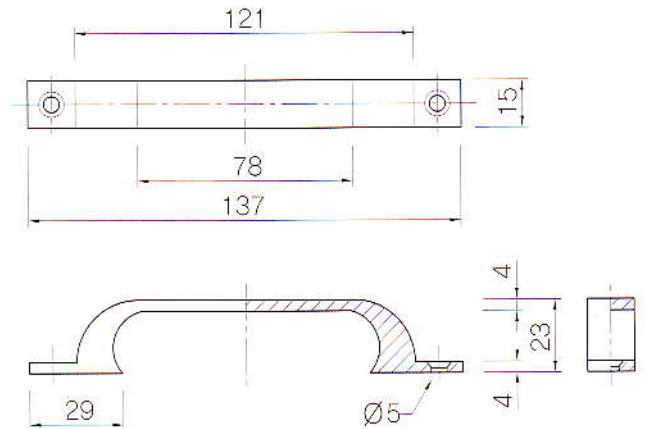
U-Handle

*재질 : 알루미늄(은색도장)

**WJs****UH11 U자 손잡이**

U-Handle

*재질 : 알루미늄(은색도장)

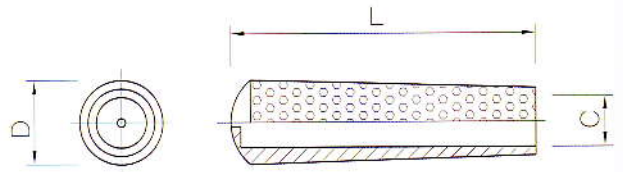


WJs

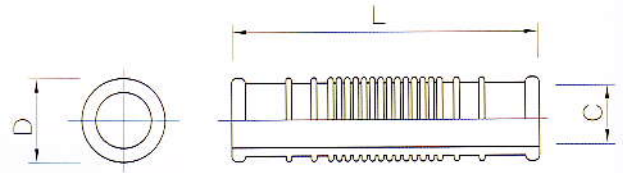
PPG 파이프 손잡이

Pvc Pipe Grips

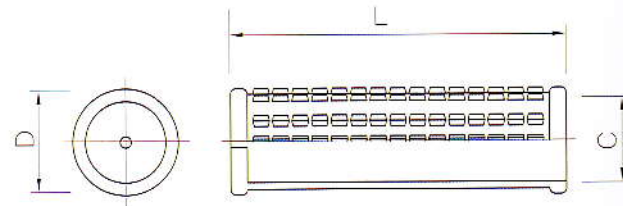
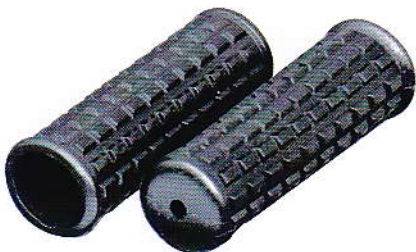
*재질 : PVC



PPG 1



PPG 2



PPG 3

단위:mm

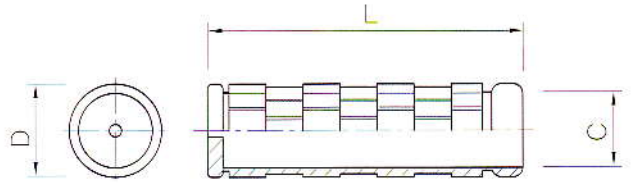
TYPE	C	L	D	비고
PPG 1	19 , 17	110	29	
PPG 2	12 , 16	100	29	관통형
PPG 3	25 , 30	110	34	관통형

WJs

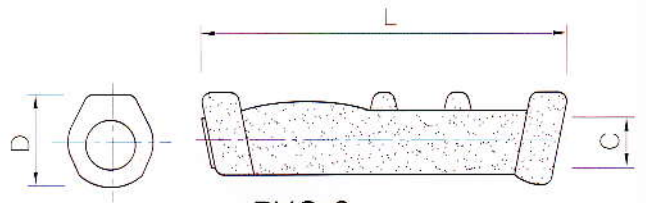
PVG PVC 손잡이

PVC Grips

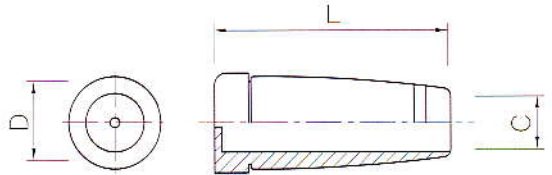
*재질 : PVC



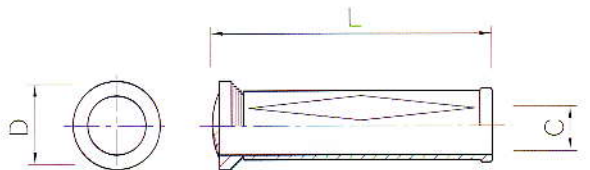
PVG 5



PVG 6



PVG 7

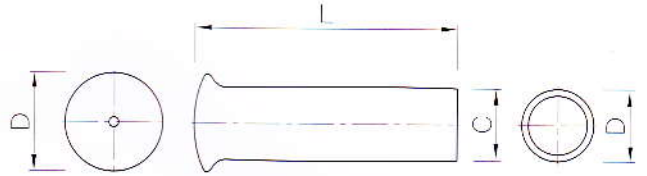


PVG 8

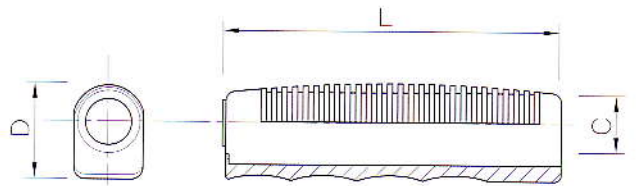
단위:mm

TYPE	C	L	D	비고
PVG 5	21	105	28	
PVG 6	21	97	30	
PVG 7	21	106	30	
PVG 8	21	109	30	

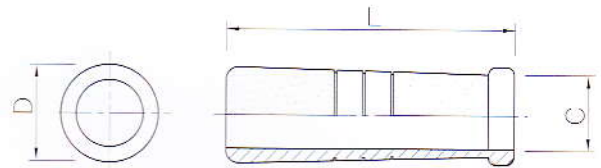
*재질 : PVC



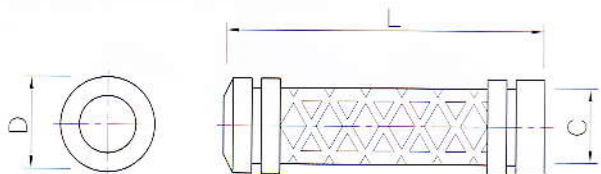
PVG1



PVG2



PVG3



PVG4

단위:mm

TYPE	C	L	D	비고
PVG 1-1	21	90	34	
PVG 1-2	21	90	34	관통형
PVG 2	21	112	34	
PVG 3	21	116	34	
PVG 4-1	21	120	30	
PVG 4-2	21	120	30	관통형